

Bay View Boat Club

Midwinter Madness - 2018-19 SAILING INSTRUCTIONS

The following RRS are changed –25,28.1, 35, 63.1, 63.7, A2, A4, A5

- 1) **RULES:** This regatta will be governed by the Racing Rules of Sailing.
 - 1.1) RRS 63.7, Conflict Between Rules, is replaced by, “If there is a conflict between the sailing instructions and the notice of race, the sailing instructions shall apply.”
- 2) **COMMUNICATIONS :**All notices and changes will be posted on the BVBC race bulletin board located in the BVBC Clubhouse or on line at least one hour before the warning signal.
 - 2.1) RRS 25 is changed to allow for on-the-water radio communication between the Race Committee and racing boats on VHF channel 71.
 - 2.2) Participating boats must notify the Race Committee if they are dropping out of the race or will be unable to finish the race within the stated time limit found in the sailing instructions.
 - 2.3) Signals shall be displayed on the water from a designated racer.
- 3) **SCHEDULE OF RACES:** There will be one race per day 13:00 warning and no race will start after 14:00
- 4) **DIVISIONS- CLASS FLAG:** There will be one division
- 5) **COURSES TO BE SAILED:**

<i>Course #</i>	<i>Dist.(n/m)</i>	<i>Course to sail</i>
2	Start 34(P)	SC(P) Finish
4	Start NAS2(P)	Finish
7	Start 33(P)	Finish
R	(Course #)	Reverse course
T	(Course #)	Twice around course
19	Fleet Raft-up near AS1 at 1400	
- 6) **MARKS:** For a map and description of marks see chart and table on the bottom of this document.
- 7) **START-FINISH:**
 - 7.1) The starting and finish line will be an imaginary line between the Mark AS1 and an orange marker on the BVBC race deck. AS1 shall be left to port. This changes RRS. 28.1
 - 7.2) The starting sequence will be broadcast on VHF channel 71.

7.3) Starting Sequence

Will commence at 13:00 GPS time. Each boat will maintain it's own countdown to 10:05 Start.

7.4) Finish Times

Each race boat will record their own GPS finish time when crossing the Finish Line. Call or text your Finish Time to the PRO Lloyd Ritchey at 408-601-9355.

8) TIME LIMIT:

The time limit for all evening races shall be 4 pm, this will be extended by 20 minutes if at least one boat has finished within the time limit. A boat that fails to finish within the time limit will be scored DNF without a hearing, this changes RRS 35, 63.1, A4 and A5.

9) PROTESTS:

9.1 Protests and Requests for Redress must be filed with the race committee at the BVBC clubhouse within 1 hour of either the end of the time limit the last race of the day, or the last boat finishing the last race of the day, whichever comes first.

9.2 The time and place of all protest hearing(s), the boat(s) protesting, boat(s) being protested and boat(s) requesting redress will be posted on the Official BVBC race bulletin board.. This posting shall serve as notification as per RRS 63.2.

10) SCORING: The low point scoring system will be used. Time on Distance method of handicap shall be used. One throw out race is allowed.

11) AWARDS: Awards for First, Second and Third will be given for the series. There will be daily prizes for each day of racing. Prizes will be awarded at the clubhouse shortly after the race.

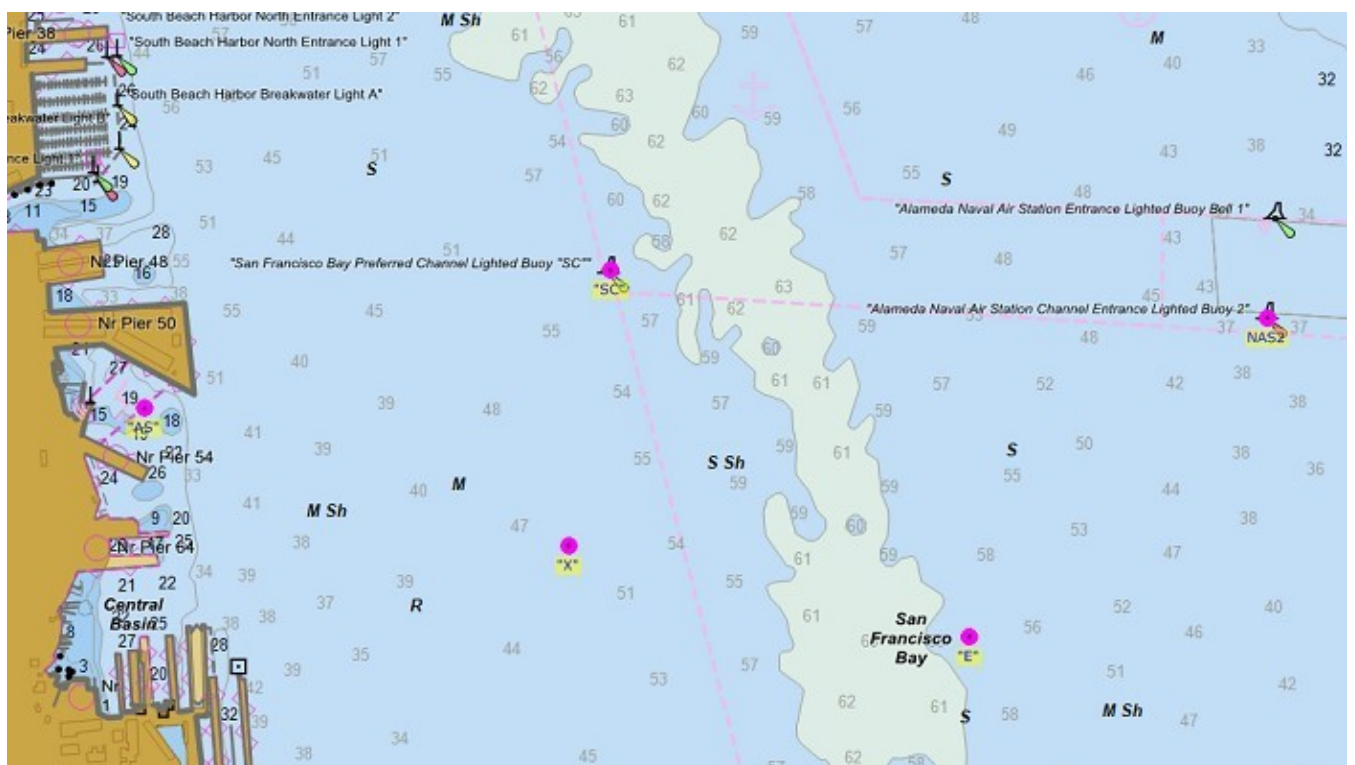
12) Description of marks:

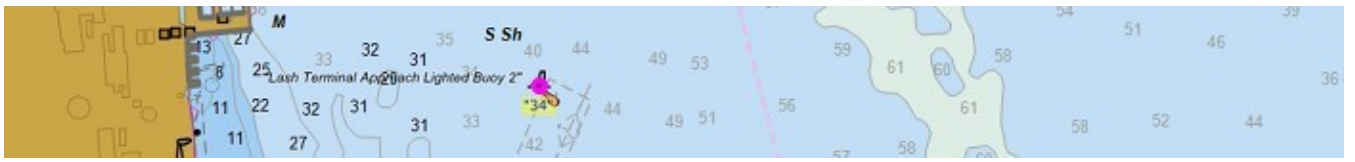
- AS1 Yellow sphere, 0.15 nm East of the Bay View Boat Club
- SC Green & red buoy, "SC" FL G (2+1), 0.7 nm East North East of Pier 50
- 34 Red buoy "2" FL R 2.5s, 0.6 nm East of Potrero Point
- NAS2 Red buoy "R2" FL R 4s, Alameda NAS1 Entrance, 2.0 nm East of Pier 50
- 33 FL R 4s Red "4", Oakland Inner Harbor Entrance Channel

PRO: Lloyd Ritchey

lritchey1@gmail.com

408-601-9355





PRO: Lloyd Ritchey

llritchey1@gmail.com

408-601-9355

BVBC Midwinter Madness 11/5/18